

Type VRSE..A pilot operated check valves

- Single acting
- DIN 2353

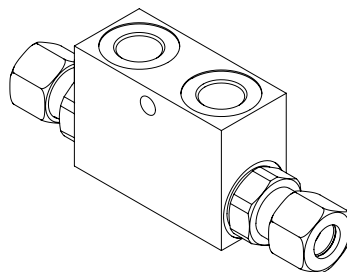
Port size
VRSE 02 A

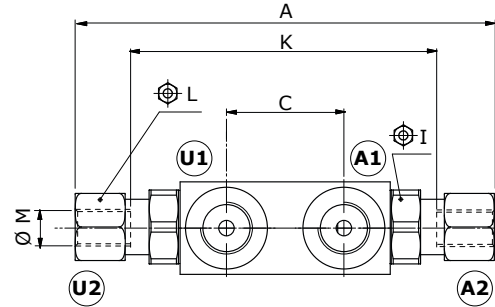
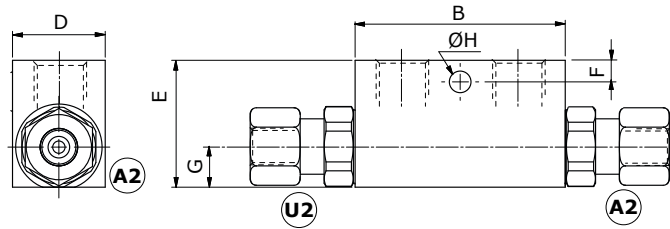
| Type | Selection 1 | Selection 2 | Nominal flow | Max. pressure | ports | weight |
|----------|-------------|-------------|---------------|---------------|---------------|-------------|
| | | | l/min(US gpm) | bar(psi) | | Kg(lb) |
| VRSE01A | P4.5 P4 | PaXX | 30 (7.9) | 350 (5100) | G1/4 M12-0,49 | 0.67 (1.48) |
| VRSE015A | | | 30 (7.9) | 350 (5100) | G3/8 M12-0.47 | 0.66 (1.45) |
| VRSE02A | | | 50 (13.2) | 300 (4350) | G3/8 M15-0.59 | 0.97 (2.14) |
| VRSE025A | | | 50 (13.2) | 300 (4350) | G1/2 M15-0.59 | 0.91 (2.01) |
| VRSE03A | | | 80 (21.1) | 300 (4350) | G1/2 M18-0.71 | 1.67 (3.68) |

| Hydraulic diagram | Type | Execution | Operation/ Features | Max. flow up to | | Max.press. up to | |
|-------------------|----------------|-----------|--------------------------|-----------------|--------|-------------------|--------------------|
| | | | | l/min | US gpm | bar | psi |
| | VRSE..A | | single acting DIN2353 | 80 | 21.1 | 350 steel body | 5100 steel body |

Ordering codes and description

Port size
VRSE 02 A

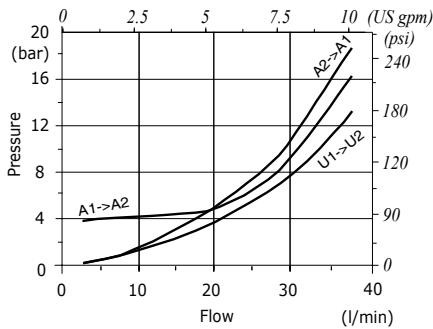
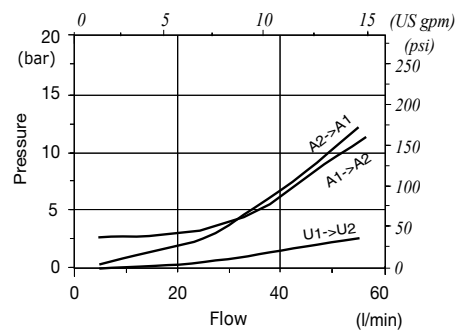


Dimensions


| Valve type | A1-U1 | A2-U2 (Ø M) |
|-----------------|-------|-------------|
| VRSE01A | G1/4 | 12-0.47 |
| VRSE015A | G3/8 | 12-0.47 |
| VRSE02A | G3/8 | 15-0.59 |
| VRSE025A | G1/2 | 15-0.59 |
| VRSE03A | G1/2 | 18-0.71 |

Dimensions are in mm-in

| Valve type | A | B max. | C | D | E | F | G | ØH | ØI | ØL | K |
|-----------------|----------|---------|---------|---------|---------|---------|---------|----------|----|----|----------|
| VRSE01A | 138-5.43 | 68-2.68 | 38-1.50 | 30-1.18 | 40-1.57 | 7-0.27 | 13-0.51 | 8-0.31 | 24 | 22 | 86-3.38 |
| VRSE015A | 138-5.43 | 68-2.68 | 38-1.50 | 30-1.18 | 40-1.57 | 7-0.27 | 13-0.51 | 8-0.31 | 24 | 22 | 86-3.38 |
| VRSE02A | 166-6.53 | 80-3.15 | 40-1.57 | 30-1.18 | 50-1.97 | 15-0.59 | 16-0.63 | 8.5-0.33 | 27 | 27 | 108-4.25 |
| VRSE025A | 166-6.53 | 80-3.15 | 40-1.57 | 30-1.18 | 50-1.97 | 15-0.59 | 16-0.63 | 8.5-0.33 | 27 | 27 | 108-4.25 |
| VRSE03A | 180-7.09 | 90-3.54 | 40-1.57 | 40-1.57 | 60-2.36 | 15-0.59 | 20-0.79 | 8.5-0.33 | 30 | 32 | 133-5.24 |

Rating diagrams
VRSE01A pressure drop vs. flow

VRSE02A pressure drop vs. flow

VRSE03A pressure drop vs. flow
