

Type VRFB90 needle valves

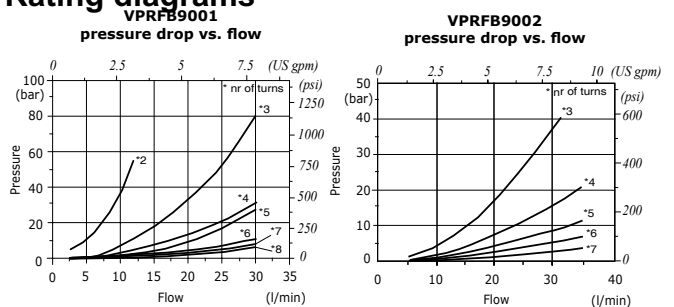
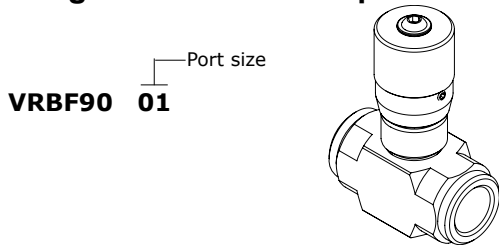
- Bidirectional

Port size
VRBF90 01

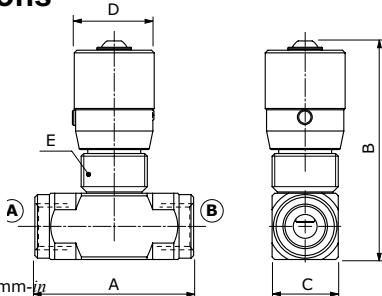
Type	Selection 1	Selection 2	Nominal flow	Max. pressure	ports	weight
			l/min(US gpm)	bar(psi)		Kg(lb)
VRFB9001			30(7.9)	350(5100)	All G1/4	0.34(0.75)
VRFB9002			40(10.6)	350(5100)	All G3/8	0.34(0.75)
VRFB9003			50(23.8)	350(5100)	All G1/2	0.43(0.95)
VRFB9004			80(21.1)	320(4600)	All G3/4	1.13(2.49)
VRFB9005			110(29.1)	300(4350)	All G1"	1(2.2)

Hydraulic diagram	Type	Execution	Operation/ Features	Max. flow up to		Max.press. up to	
				l/min	US gpm	bar	psi
	VRFB90	2 way	bidirectional	110	29.1	350 steel body	5100 steel body

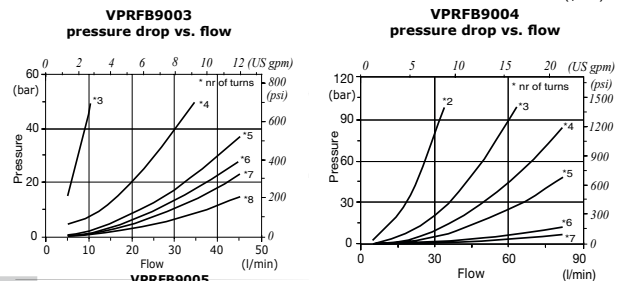
Ordering codes and description — Rating diagrams



Dimensions



Dimensions are in mm



Valve type	All ports	A	B	C	D	E
VRFB9001	G1/4	58 - 2.28	82 - 3.23	25 - 0.98	30 - 1.18	M25X1.5
VRFB9002	G3/8	60 - 2.36	82 - 3.23	25 - 0.98	30 - 1.18	M25X1.5
VRFB9003	G1/2	64 - 2.52	88 - 3.46	30 - 1.18	30 - 1.18	M25X1.5
VRFB9004	G3/4	89 - 3.50	116 - 4.57	40 - 1.57	42 - 1.65	M35X1.5
VRFB9005	G1	89 - 3.50	116 - 4.57	40 - 1.57	42 - 1.65	M35X1.5

