

## Type VODL/V1516/CS counterbalance valves

- Double acting
- Load Sensitive (type N)
- Vented (type V)

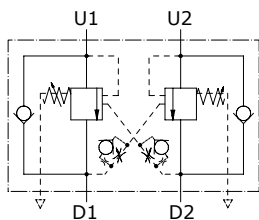
Port size —  
**VODL/V1516/CS/12/G3.p4.PR/ac**  
 Port size —  
**VODL/V1516/CS/34/G3.p4.PR/ac**

Type	Selection 1	Selection 2	Selection 3	Nominal flow	Max. pressure	ports	weight
				l/min(US gpm)	bar(psi)		Kg(lb)
VOSL/V1516/CS/12 ac	3/5/7	G/Z	p0/p4/p8	160(42.3)	350(5100)-400(5800)	G1/2	5.4(11.90)
VOSL/V1516/CS/12/F2 ac				160(42.3)	350(5100)-400(5800)	G1/2 G1/4 Ø12Ø0.472	5.4(11.90)
VOSL/V1516/CS/34 ac				160(42.3)	350(5100)-400(5800)	G3/4	5.3(11.68)
VOSL/V1516/CS/34/F2 ac				160(42.3)	350(5100)-400(5800)	G3/4 G1/4 Ø12Ø0.472	5.3(11.68)
VOSL/V1516/CS/S10 ac				160(42.3)	350(5100)-400(5800)	SAE10	5.4(11.90)
VOSL/V1516/CS/S10F2 ac				160(42.3)	350(5100)-400(5800)	SAE10 G1/4 Ø12Ø0.472	5.4(11.90)
VOSL/V1516/CS/S12 ac				160(42.3)	350(5100)-400(5800)	SAE12	5.3(11.68)
VOSL/V1516/CS/S12F2 ac				160(42.3)	350(5100)-400(5800)	SAE12 G1/4 Ø12Ø0.472	5.3(11.68)

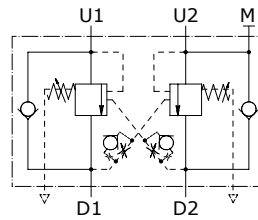
Type	Execution	Operation/ Features	Max. flow up to		Max.press. up to	
			l/min	US gpm	bar	psi
VODL/V1516/CS	double acting	vented	160	42.3	400 steel body	5800 steel body

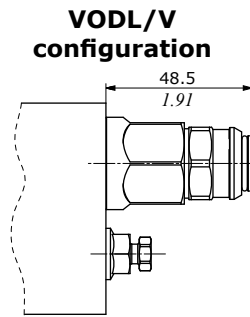
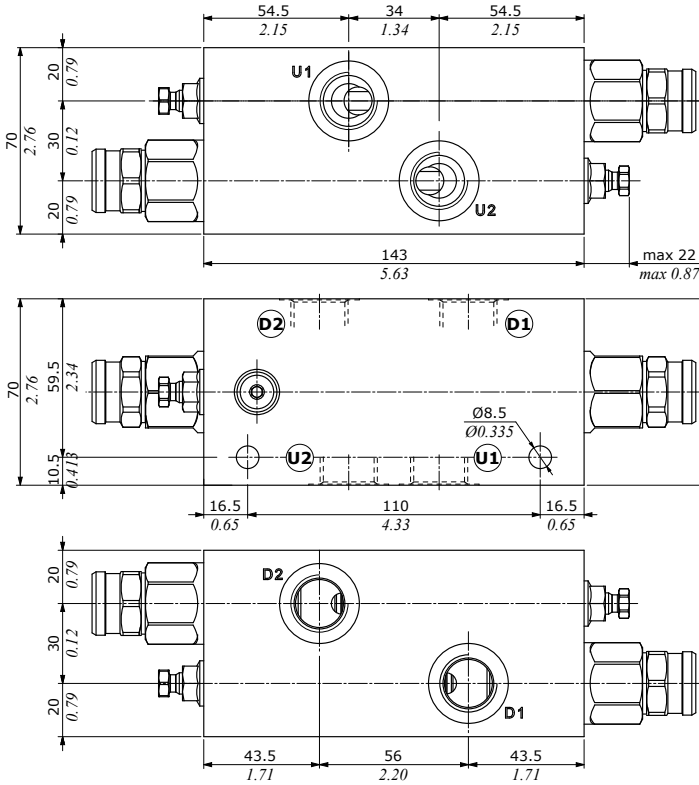
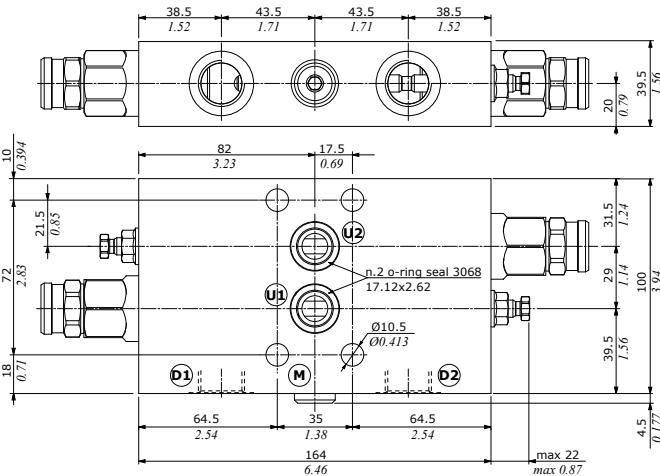
### Hydraulic diagram

**VODL/V1516/CS**



**VODL/V1516/CS/F2**



**Dimensions**
**VODL/...1516/CS/12 - VODL/...1516/CS/34**

**VODL/...1516/CS/12F2 - VODL/...1516/CS/34F2**


Valve type	Ⓛ1	Ⓛ2	Ⓛ1	Ⓛ2	Ⓛ
VODL/...1516/CS/12	G1/2	G1/2	-	-	-
VODL/...1516/CS/34	G3/4	G3/4	-	-	-
VODL/...1516/CS/12F2	G1/2	Ø12	Ø0.472	G1/4	-
VODL/...1516/CS/34F2	G3/4	Ø12	Ø0.472	G1/4	-

Valve type	Ⓛ1	Ⓛ2	Ⓛ1	Ⓛ2	Ⓛ
VODL/...1516/CS/S10	SAE10	SAE10	-	-	-
VODL/...1516/CS/S12	SAE12	SAE12	-	-	-
VODL/...1516/CS/S10F2	SAE10	Ø12	Ø0.472	G1/4	-
VODL/...1516/CS/S12F2	SAE12	Ø12	Ø0.472	G1/4	-

**Ordering codes and description**

Port size  
**VODL/V1516/CS/12/G3.p4.PR/ac**



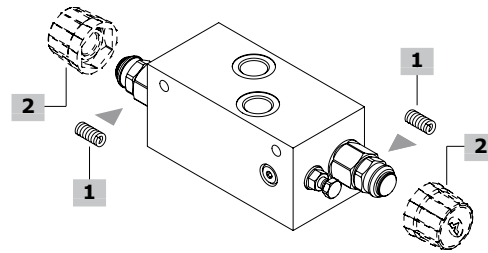
Port size  
**VODL/V1516/CS/34/G3.p4.PR/ac**


**Selection 2**

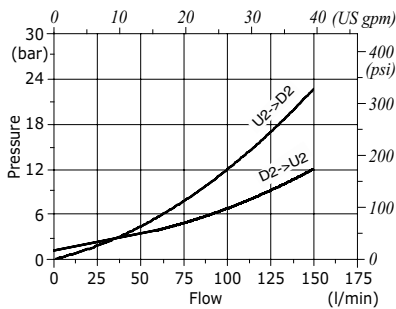
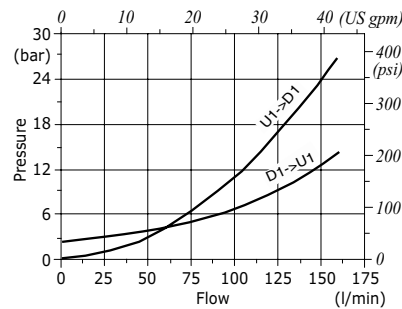
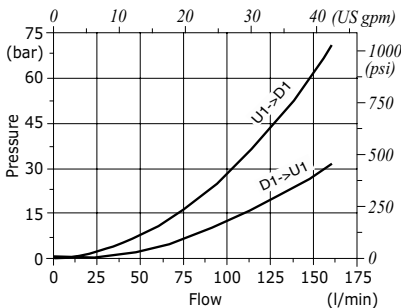
TYPE	DESCRIPTION
G	Screw setting
Z	Antitampering cap

**Selection 3**

TYPE	DESCRIPTION
p0	pilot ratio 0
p4	pilot ratio 1:4
p8	pilot ratio 1:8


**Selection 1**

TYPE	DESCRIPTION
<b>For 1:4 and zero differential pilot ratio</b>	
3	For range 50-210 bar (725-3050 psi)
5	For range 150-350 bar (2175-5075 psi)
7	For range 200-400 bar (2900-5800 psi)
<b>For 1:8 pilot ratio</b>	
5	For range 180-350 bar (2610-5075 psi)
7	For range 200-400 bar (2900-5800 psi)

**Dimensions**
**VODL/(N-V) 1516/CS (12-34) pressure drop vs. flow from D2->U2 and U2->D2**

**VODL/(N-V) 1516/CS (12-34) pressure drop vs. flow from D1->U1 and U1->D1 pilot ratio 1:4**

**VODL/(N-V) 1516/CS (12-34) pressure drop vs. flow from D1->U1 and U1->D1 pilot ratio 1:8**

**VODL/(N-V) 1516/CS (12-34) pressure drop vs. flow from D1->U1 and U1->D1 zero differential pilot ratio**
