

Type VRDE..CIL pilot operated check valves

- Double acting
- With bolt connection

Port size
VRDE 02 CIL

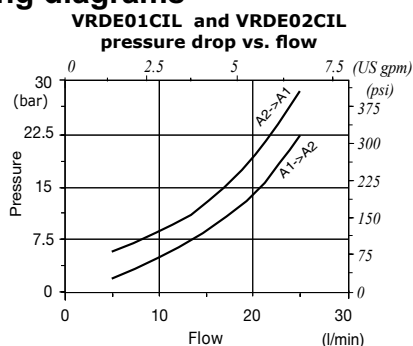
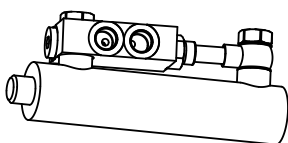
Type	Selection 1	Selection 2	Nominal flow	Max. pressure	ports	weight
			l/min(US gpm)	bar(psi)		Kg(lb)
VRSE01CIL	-	-	20 (5.3)	300 (4350)	All G1/4	0.45 (0.99)
VRSE02CIL	-	-	20 (5.3)	300 (4350)	All G3/8	0.65 (1.43)

Hydraulic diagram	Type	Execution	Operation/ Features	Max. flow up to		Max.press. up to	
				l/min	US gpm	bar	psi
	VRDE..CIL		double acting bolt connection	20	5.3	300 steel body	4350 steel body

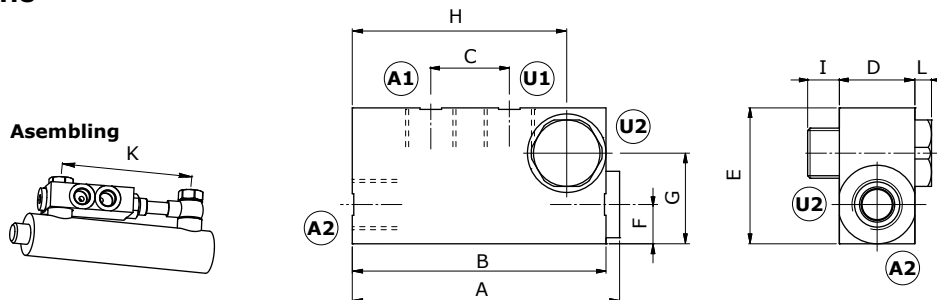
Ordering codes and description

Rating diagrams

Port size
VRDE 02 CIL



Dimensions



Dimensions are in mm-in

Valve type	A	B	C	D	E	F	G	H	I	L	K min
VRDE01CIL	88.5-3.48	84-3.31	24-0.94	20-0.79	40-1.57	10-0.39	27-1.06	68.5-2.7	10-0.39	6-0.23	123-4.84
VRDE02CIL	90.5-3.56	86-3.38	26-1.02	25-0.98	45-1.77	12-0.47	31-1.22	72-2.83	11-0.43	7-0.27	127-5