

Type VUC check valves

- Poppet type

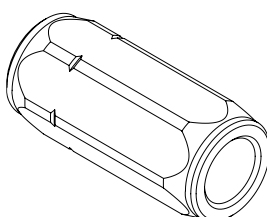
Port size Opening pressure (bar)
VUC14/Pa0,5 FO
 - without hole
FO with metering hole

Type	Selection 1	Selection 2	Nominal flow	Max. pressure	ports	weight
			l/min(US gpm)	bar(psi)		Kg(lb)
VUC 14	PaXX	Without hole / with metering hole	30(7.9)	400(5800)	All G 1/4	0.10(0.22)
VUC 38			50(13.2)	400(5800)	All G 3/8	0.18(0.40)
VUC 12			90(23.8)	350(5100)	All G 1/2	0.31(0.68)
VUC 34			130(34.3)	300(4350)	All G 3/4	0.56(1.23)
VUC 100			180(47.6)	270(3900)	All G 1"	0.91(2.01)
VUC 114			250(66)	250(3600)	All G 1"1/4	1.48(3.26)
VUC 112			380(100)	200(2900)	All G 1"1/2	2.37(5.22)

Hydraulic diagram	Type	Execution	Operation/ Features	Max. flow up to		Max.press. up to	
				l/min	US gpm	bar	psi
	VUC	poppet type		380	100	400	5800

Ordering codes and description

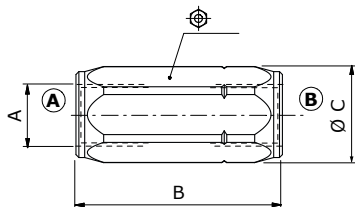
Port size Opening pressure (bar)
VUC14/Pa0,5 FO
 - without hole
FO with metering hole



VUC

Dimensions

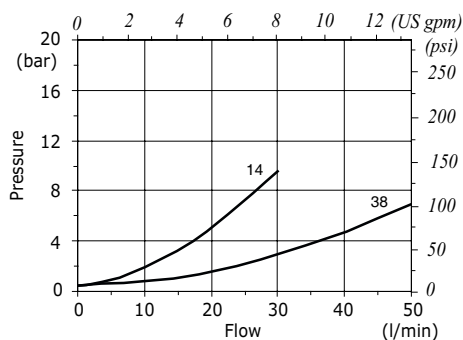
Dimensions are in mm-in



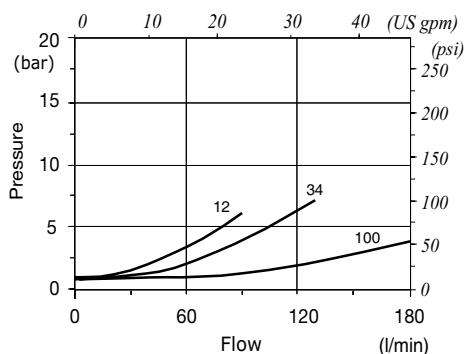
Valve type	A	B	Ø C	⊕
VUC 14	G 1/4	58 - 2.28	21 - 0.83	19
VUC 38	G 3/8	62 - 2.44	27 - 1.05	24
VUC 12	G 1/2	71 - 2.79	33 - 1.30	30
VUC 34	G 3/4	83 - 3.27	40 - 1.57	36
VUC 100	1	106 - 4.17	59 - 2.32	45
VUC 114	G 1 1/4	127 - 5	63 - 2.48	55
VUC 112	G 1 1/2	138 - 5.43	74 - 2.91	65

Rating diagrams

VUC14-VUC38 pressure drop vs. flow
opening pressure 0.5 bar (7.25 psi)



VUC12-VUC34-VUC100 pressure drop vs. flow
opening pressure 0.5 bar (7.25 psi)



VUC114-VUC112 pressure drop vs. flow
opening pressure 0.5 bar (7.25 psi)

