

## Type VOSLP/N1116 counterbalance valves

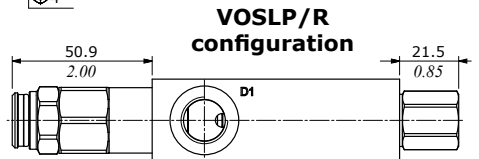
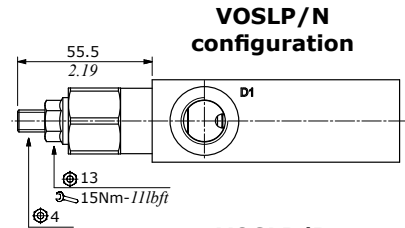
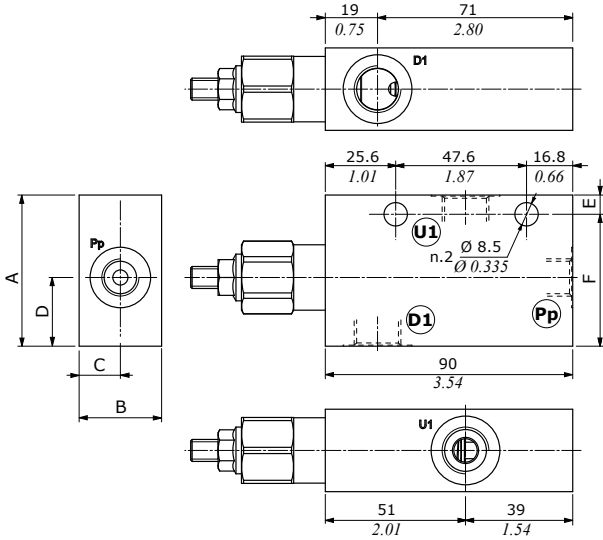
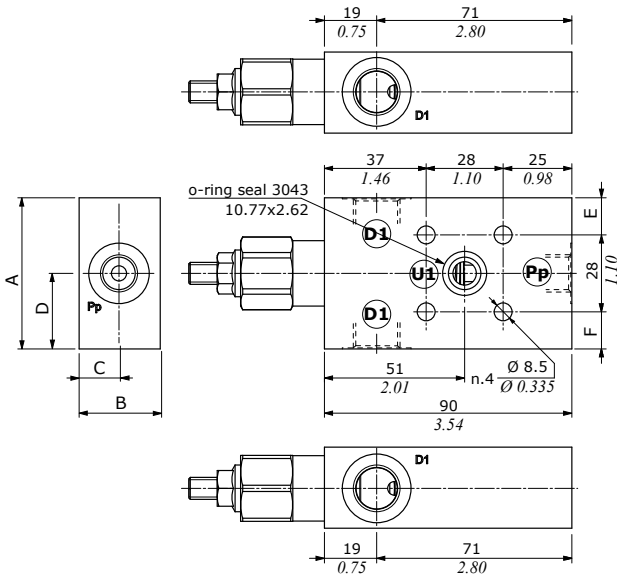
- Single acting
- External pilot
- Load Sensitive (type N)
- Relief Compensated (type R)

Port size —  
**VOSLP/N1116/38/G3.p4/ac**

Port size —  
**VOSLP/N1116/12/G3.p4/ac**

Type	Selection 1	Selection 2	Selection 3	Nominal flow	Max. pressure	ports	weight
				l/min(US gpm)	bar(psi)		Kg(lb)
VOSLP/N1116/38	3/5	G/Z	P0/P4/P8	60(15.9)	210(3050)	All G3/8	0.51(1.12)
VOSLP/N1116/38 /ac				60(15.9)	350(5100)	All G3/8	1.13(2.49)
VOSLP/N1116/38F1				60(15.9)	210(3050)	G3/8 G1/4 Ø8.5Ø0.335	0.51(1.12)
VOSLP/N1116/38F1 ac				60(15.9)	350(5100)	G3/8 G1/4 Ø8.5Ø0.335	1.13(2.49)
VOSLP/N1116/12				60(15.9)	210(3050)	All G1/2	0.65(1.43)
VOSLP/N1116/12 ac				60(15.9)	350(5100)	All G1/2	1.51(3.33)
VOSLP/N1116/12F1				60(15.9)	210(3050)	G1/2 G1/4 Ø8.5Ø0.335	0.65(1.43)
VOSLP/N1116/12F1 ac				60(15.9)	350(5100)	G1/2 G1/4 Ø8.5Ø0.335	1.51(3.33)
VOSLP/N1116/S8				60(15.9)	210(3050)	SAE8	0.51(1.12)
VOSLP/N1116/S8 ac				60(15.9)	350(5100)	SAE8	1.13(2.49)
VOSLP/N1116/S8F1				60(15.9)	210(3050)	SAE8 G1/4 Ø8.5Ø0.335	0.51(1.12)
VOSLP/N1116/S8F1 ac				60(15.9)	350(5100)	SAE8 G1/4 Ø8.5Ø0.335	1.13(2.49)
VOSLP/N1116/S10				60(15.9)	210(3050)	SAE10	0.65(1.43)
VOSLP/N1116/S10 ac				60(15.9)	350(5100)	SAE10	1.51(3.33)
VOSLP/N1116/S10F1				60(15.9)	210(3050)	SAE10 G1/4 Ø8.5Ø0.335	0.65(1.43)
VOSLP/N1116/S10F1 ac				60(15.9)	350(5100)	SAE10 G1/4 Ø8.5Ø0.335	1.51(3.33)

Hydraulic diagram	Type	Execution	Operation/ Features	Max. flow up to		Max.press. up to	
				l/min	US gpm	bar	psi
<p><b>VOSLP/N1116</b></p>	<b>VOSLP/N1116</b>	single acting	load sensitive with external pilot	60	15.9	210	3050
<p><b>VOSLP/N1116/F1</b></p>						alum. body 350 steel body	alum. body 5100 steel body

**Dimensions**
**VOSLP/...1116/38 - VOSLP/...1116/12**

**VOSLP/...1116/38F1 - VOSLP/...1116/12F1**


Valve type	D1	U1	Pp
VOSLP/...1116/38	G3/8	G3/8	G1/4
VOSLP/...1116/12	G1/2	G1/2	G1/4
VOSLP/...1116/38F1	G3/8	Ø8.5 Ø0.335	G1/4
VOSLP/...1116/12F1	G1/2	Ø8.5 Ø0.335	G1/4

Valve type	D1	U1	Pp
VOSLP/...1116/S8	SAE8	SAE8	SAE6
VOSLP/...1116/S10	SAE10	SAE10	SAE6
VOSLP/...1116/S8F1	SAE8	Ø8.5 Ø0.335	SAE6
VOSLP/...1116/S10F1	SAE10	Ø8.5 Ø0.335	SAE6

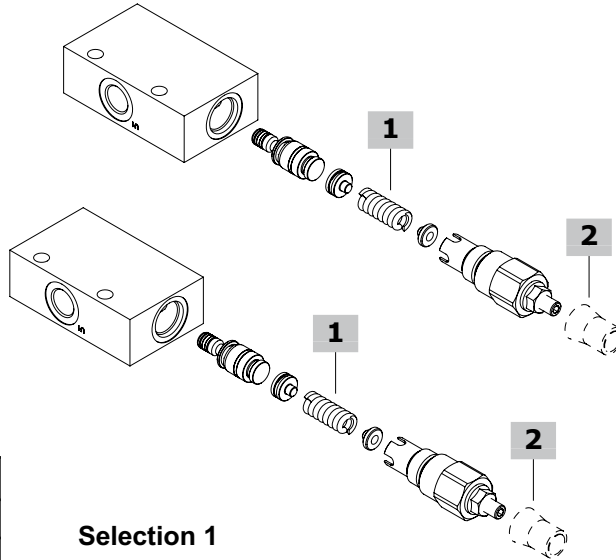
Dimensions are in mm-in

Valve type	A	B	C	D	E	F
VOSLP/...1116/38	55	30	15	25	48	7
VOSLP/...1116/S8	2.17	1.18	0.59	0.98	1.89	0.276
VOSLP/...1116/12	65	35	17.5	32.5	54	11
VOSLP/...1116/S10	2.26	1.38	0.69	1.28	2.13	0.433
VOSLP/...1116/38F1	55	29.5	14.5	27.5	13.5	13.5
VOSLP/...1116/S8F1	2.17	1.16	0.57	1.08	0.53	0.53
VOSLP/...1116/12F1	65	34.5	17	32.5	18.5	18.5
VOSLP/...1116/S10F1	2.26	1.36	0.67	1.28	0.73	0.73

**Ordering codes and description**

Port size  
**VOSLP/N1116/38/G3.p4/ac**  
 2 1

Port size  
**VOSLP/N1116/12/G3.p4/ac**  
 2 1



**Selection 2**

TYPE	DESCRIPTION
G	Screw setting
Z	Antitampering cap

**Selection 3**

TYPE	DESCRIPTION
p0	pilot ratio 0
p4	pilot ratio 1:4
p8	pilot ratio 1:8

**Selection 1**

TYPE	DESCRIPTION
<b>For 1:4 and zero differential pilot ratio</b>	
3	For range 50-210 bar (725-3050 psi)
5	For range 150-350 bar (2175-5075 psi)
<b>For 1:8 pilot ratio</b>	
5	For range 180-350 bar (2610-5075 psi)

**Dimensions**

**VOSLP/(N-R) 1116 (38-12) pressure drop vs. flow from D1->U1 and U1->D1**

