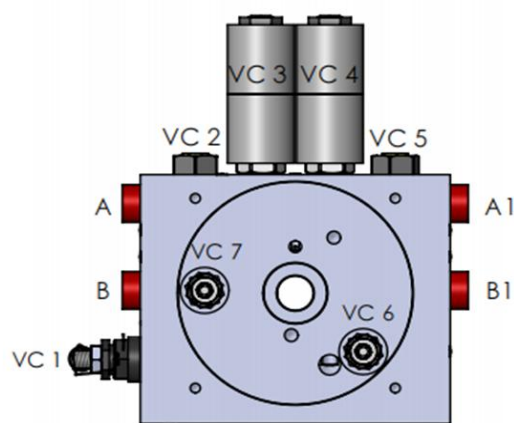
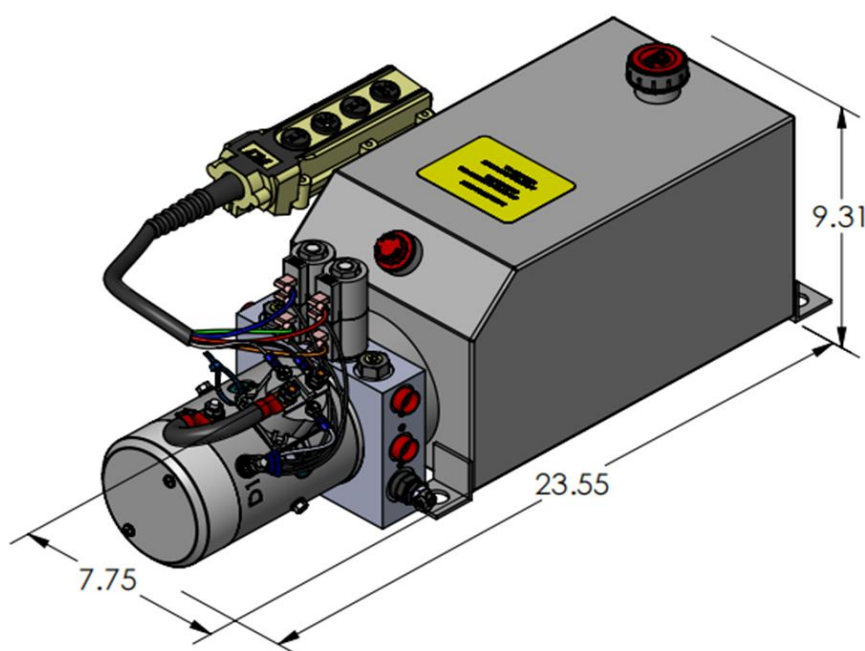


HYDRAULIC CIRCUIT 208



VIEW FROM RESERVOIR SIDE



CAVITY 1: CARTRIDGE RELIEF VALVE  
CAVITY 2: DUAL PILOT OPERATED CHECK VALVE  
CAVITY 3: 4W3P MOTOR CENTER VALVE  
CAVITY 4: 4W3P MOTOR CENTER VALVE  
CAVITY 5: DUAL PILOT OPERATED CHECK VALVE  
CAVITY 6: 2ND RELIEF VALVE  
CAVITY 7: 2ND RELIEF VALVE

AS SHOWN:  
MOTOR: 12V DC  
MANIFOLD: MANIFOLD III®.  
PUMP: PL SERIES  
RESERVOIR: 12 QT STEEL  
4 BUTTON REMOTE PENDANT

## HYDRAULIC CIRCUIT 208:

### MOTOR

OD 3.0" 12V DC  
OD 4.5" 12/24V DC

### PUMP

PL	IN <sup>3</sup>
0.6	0.0384
6.0	0.3681

### RESERVOIR

PLASTIC RESERVOIR  
3 QT----14 QT  
  
STEEL RESERVOIR  
1.5 QT----7 GALLON

### MOUNTING

HORIZONTAL  
VERTICAL

### MISC

DC START SWITCH  
REMOTE PENDANT